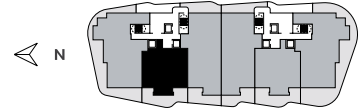


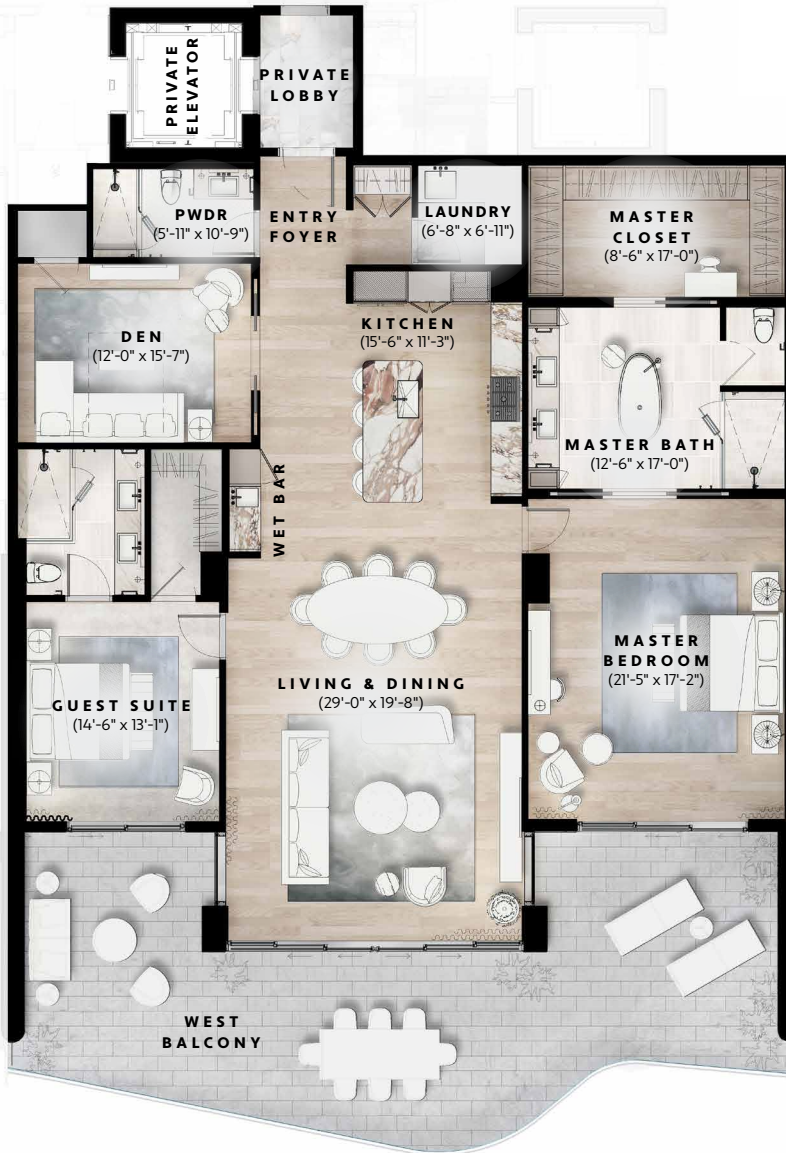


THE RITZ-CARLTON RESIDENCES

ESTERO BAY



Bay View



SOUTH TOWER RESIDENCE

2

2 BEDROOM
3 BATHROOM
DEN

INTERIOR
2,628 SQ FT

EXTERIOR
770 SQ FT

TOTAL
3,398 SQ FT



The Ritz-Carlton Residences, Estero Bay are not owned, sold or developed by The Ritz-Carlton Hotel Company, L.L.C. or its affiliates ("The Ritz-Carlton"). LB Estero Bay Investments, LLC uses The Ritz-Carlton marks under a license from The Ritz-Carlton, which has not confirmed the accuracy of any of the statements or representations made herein.

The above drawings are conceptual only and are subject to change without notice at the discretion of the developer. The dimensions set forth in this sales brochure are measured to the exterior boundaries of the exterior walls and the centerline of interior demising walls and vary from the dimensions set forth in the Declaration of Condominium, which is measured to include only interior space. The total condominium unit square footages shown in the Declaration of Condominium are less than the square footages shown in this sales brochure. The purchase terms, plans, features and amenities described herein are based on current development plans, which are subject to change without notice. Prospective buyers should not rely on any information in this document as a warranty or representation to rely upon for making a purchase decision, which should only be made after review of the documents required under Chapter 718, Florida Statutes, and an executed Purchase and Sale Agreement. This is not an advertisement or solicitation to purchase in states where prohibited by law.

ORAL REPRESENTATIONS CANNOT BE RELIED UPON AS CORRECTLY STATING REPRESENTATIONS OF THE DEVELOPER. FOR CORRECT REPRESENTATIONS, MAKE REFERENCE TO THIS BROCHURE AND TO THE DOCUMENTS REQUIRED BY SECTION 718.503, FLORIDA STATUTES, TO BE FURNISHED BY A DEVELOPER TO A BUYER OR LESSEE.